

TECHNICAL DATA

Minimum height	mm	470
Maximum height	mm	850
Backrest tilting angle	°	0°- 90°
Width	mm	600
Length	mm	1850
Net weight approx.	Kg	140
Maximum lifting capability	Kg	300
Lifting raising speed (with 100 Kg)	mm/ sec	22
Trendelenburg	°	20°
Classification		I
Class		B

Via Rossini, 26
40055 Villanova di Castenaso (BO), Italy
Tel. +39 051 780465 - Fax +39 051 781625
eurodent@eurodent.it



www.eurodent.it

EURODENT

Treat yourself!



SUPREME

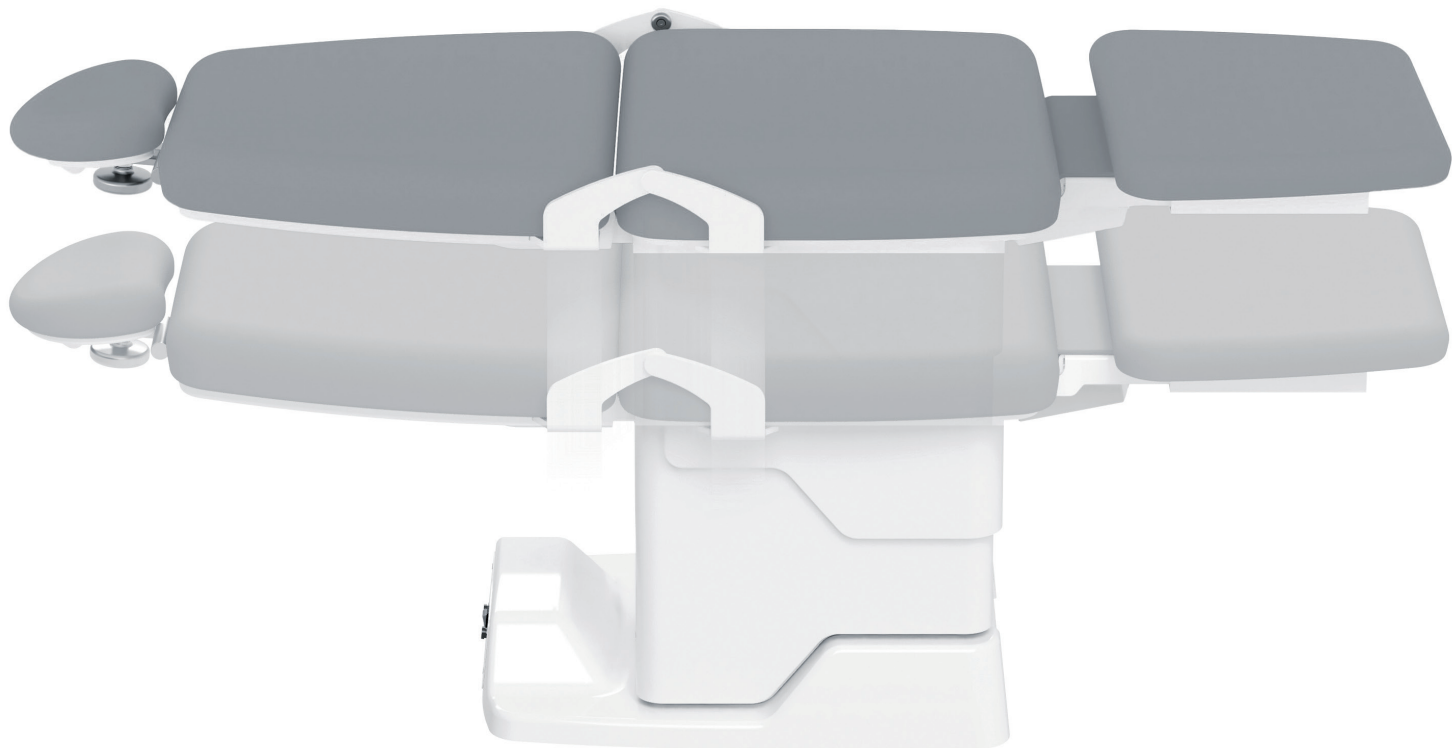
SUPREME: THE VERSATILE CHAIR FOR HEALTHCARE

SUPREME chair raises the bar when it comes to performance for the patient and the medical team. Offering easy accessibility, it is ideal for the elderly and for patients with mobility issues; it is compact so will fit into even the smallest of rooms; it is versatile and can be adjusted to a number of different positions including horizontal, for use as a bed in a range of procedures. Enables the patient to be positioned either supine or prone.

SUPREME is available in several different possible configurations, each conceived according to specific treatment purposes:
SUPREME DEN: for dentistry procedures
SUPREME SUR: for daily outpatient surgery
SUPREME AES: for medical aesthetic procedures
SUPREME ENT: for otorhinolaryngology and audiology procedures

SUPREME STANDARD FEATURES

- Complete symmetry for right- or left-handed professionals;
- Elecromechanical lifting, lowering and backrest tilting;
- Independent leg section
- Automatic extensible PU leg section;
- Independent Trendelenburg movement;
- 2 programmable positions;
- Maximum lifting capacity 300 Kg;
- 24V linear actuators
- Wireless foot control
- 2-axis articulating headrest
- Removable upholstery
- RAL 9010 paint
- Wide range of upholstery colors
- Table position
- Supine position
- Prone position



OPTIONS

- Backup Battery;
- Children’s pillow;
- Different chair paint colors;
- Different headrests available for specific treatment needs;
- European unit bracket;
- Remote control;
- Leg section foot protection;
- Armrests;
- Articulated armrests;
- Articulated arm with large instrument tray;
- Hair-tech headrest;
- Memory foam upholstery;
- Electrical outlets;
- Back and seat accessory rails;
- Double-arm instrument tray;
- U-shaped headrest;
- Prone position armrests;
- Scialytic lamp;
- Ambidextrous aspiration assistant console;
- Lateral tool holder bars;
- Paper roll holder;
- Medical standard wheels;

